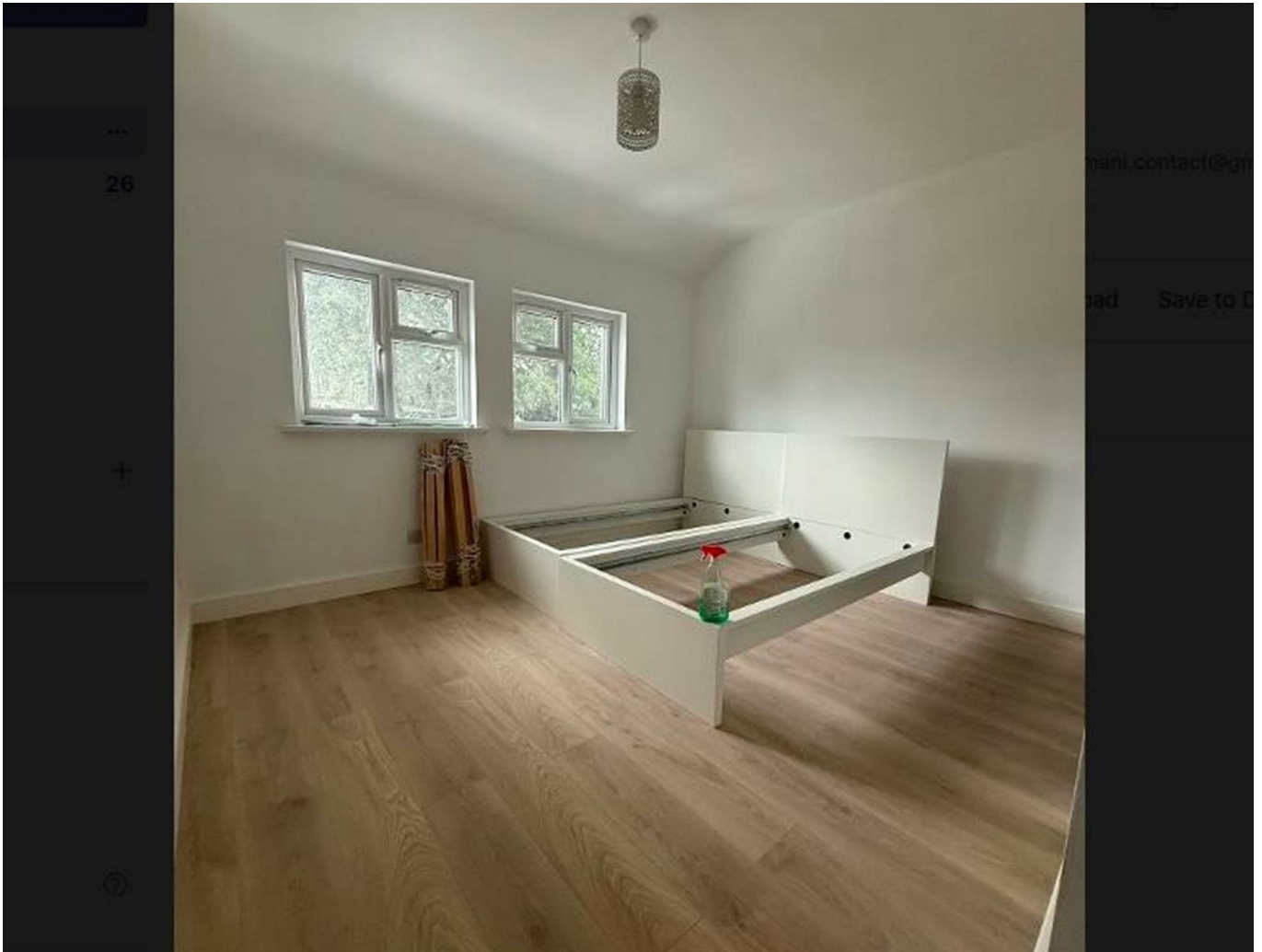




**BLUEPRINTS & CO.**  
P R O P E R T I E S

**Sales - Lettings - Management - Mortgages**



## Gospatrick road

Tottenham, London, N17 7JD

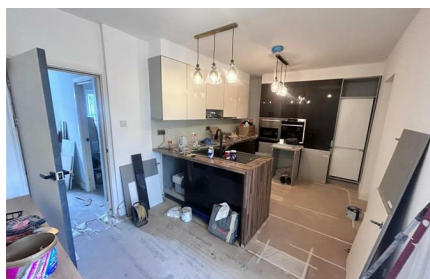
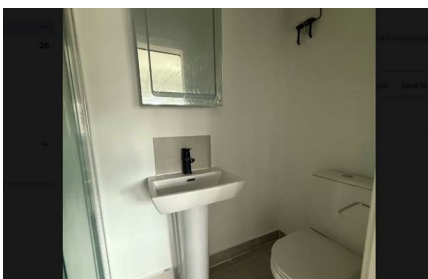
**£1,250 Per month**



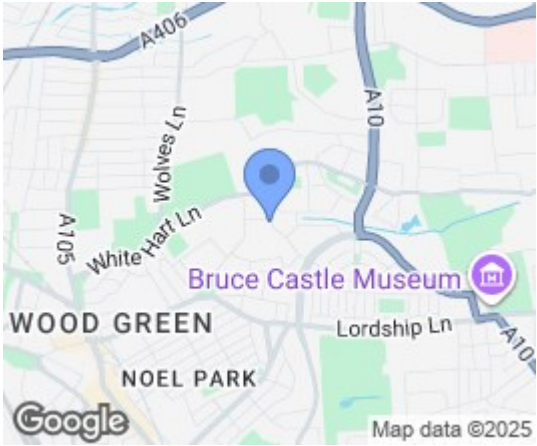
This ensuite room is newly refurbished, ensuring that you will enjoy contemporary amenities. Available for immediate occupancy, this room is perfect for individuals looking for a hassle-free living experience, as all bills are included in the rent including

The shared accommodation provides a welcoming atmosphere, ideal for socialising with fellow residents while still allowing for personal space. This property is well-suited for professionals or students who desire a convenient and comfortable living arrangement in the heart of London.

With its prime location, you will have easy access to local amenities, transport links, and the vibrant culture that London has to offer. Do not miss the chance to make this charming room your new home.



Area Map



Floor Plans



Energy Efficiency Graph



These particulars, whilst believed to be accurate are set out as a general outline only for guidance and do not constitute any part of an offer or contract. Intending purchasers should not rely on them as statements of representation of fact, but must satisfy themselves by inspection or otherwise as to their accuracy. No person in this firms employment has the authority to make or give any representation or warranty in respect of the property.