



**BLUEPRINTS & CO.**  
P R O P E R T I E S

**Sales - Lettings - Management - Mortgages**



## Linden Gardens

, Enfield, EN1 4EA

**Offers in the region of £600,000**



5



3



2



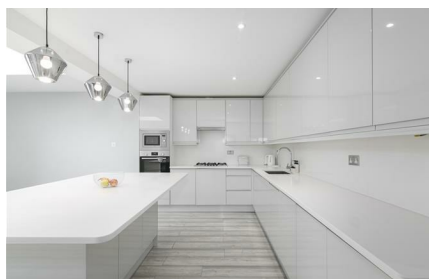
C

Blueprints & Co. Properties are pleased to present this five bedroom end of terrace house located in Enfield EN1. The house features five double bedrooms, providing ample space for a growing family or the option to create a home office or guest room. The two bathrooms and one ensuite ensure convenience for all residents, making morning routines a breeze.

One of the standout features of this home is the potential for a double story side extension, subject to planning permission. This offers the exciting possibility to further enhance the living space to suit your needs. Additionally, off-street parking is available, providing a practical solution for those with vehicles and it is offered chain free, allowing for a smooth and efficient purchase process.

Linden Gardens is a sought-after location, known for its friendly community and proximity to local amenities, schools, and parks. This property presents an excellent opportunity for those looking to settle in a vibrant area while enjoying the comforts of a spacious family home. Do not miss the chance to make this delightful house your own.

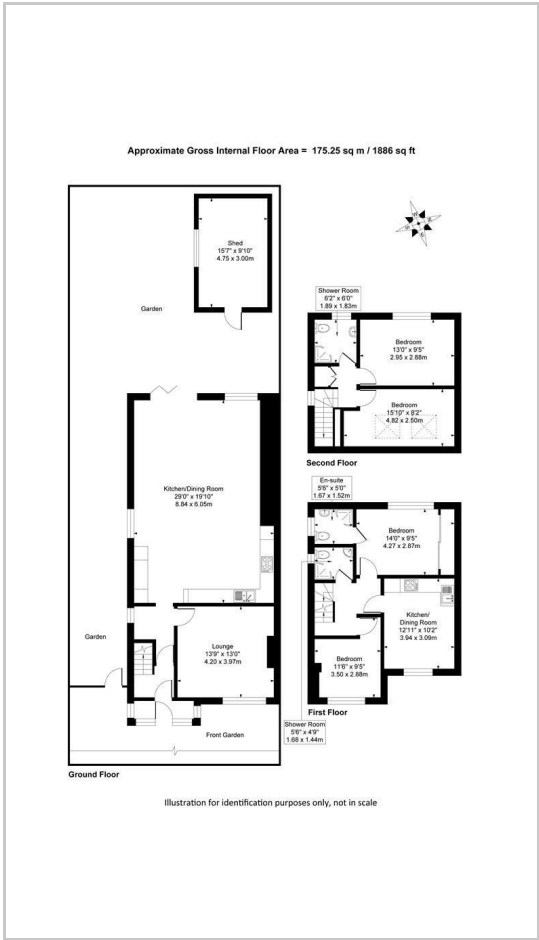
Chain Free!



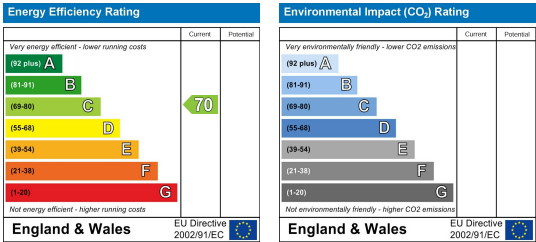
Area Map



Floor Plans



Energy Efficiency Graph



These particulars, whilst believed to be accurate are set out as a general outline only for guidance and do not constitute any part of an offer or contract. Intending purchasers should not rely on them as statements of representation of fact, but must satisfy themselves by inspection or otherwise as to their accuracy. No person in this firms employment has the authority to make or give any representation or warranty in respect of the property.