



BLUEPRINTS & CO.
P R O P E R T I E S

Sales - Lettings - Management - Mortgages



White Hart Lane

, London, N17 7LS

Offers over £450,000

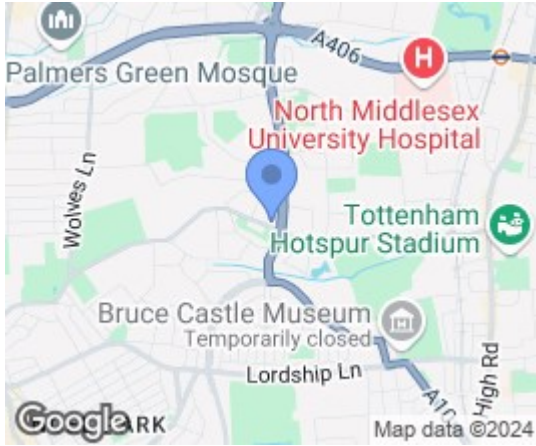


Nestled in the vibrant area of White Hart Lane, London, this charming mid-terrace house presents an excellent opportunity for families and professionals alike. The property boasts a welcoming reception room, and a kitchen on the ground floor with a private rear garden. The first floor consists of three double bedrooms and a well presented bathroom.

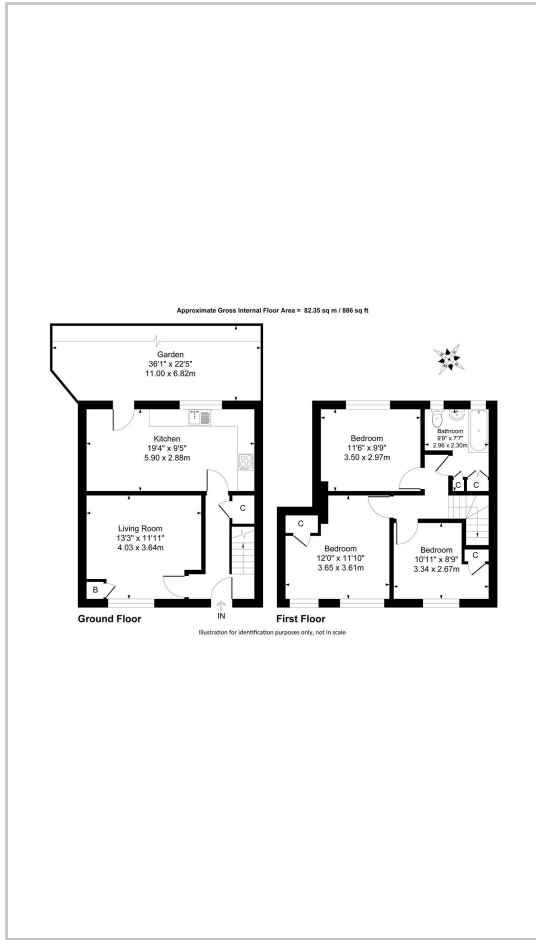
The location of this property is particularly appealing, being located nearby White Hart Lane Station and Northumberland Park Station. Residents will find themselves within easy reach of local amenities, including shops, schools, and parks. Additionally, excellent transport links provide quick access to central London.



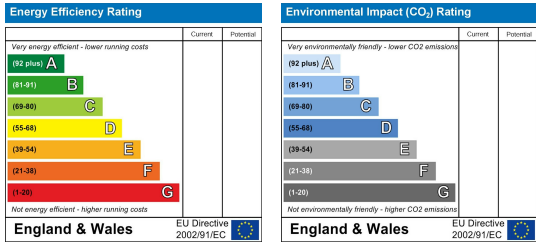
Area Map



Floor Plans



Energy Efficiency Graph



These particulars, whilst believed to be accurate are set out as a general outline only for guidance and do not constitute any part of an offer or contract. Intending purchasers should not rely on them as statements of representation of fact, but must satisfy themselves by inspection or otherwise as to their accuracy. No person in this firm's employment has the authority to make or give any representation or warranty in respect of the property.