



BLUEPRINTS & CO.
P R O P E R T I E S

Sales - Lettings - Management - Mortgages



Gilda Avenue

, Enfield, EN3 7UJ

£400,000

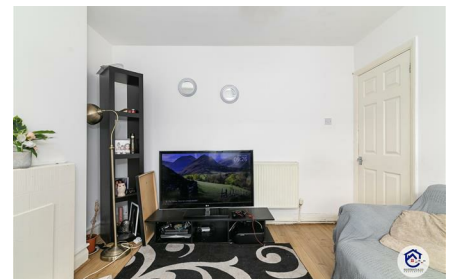
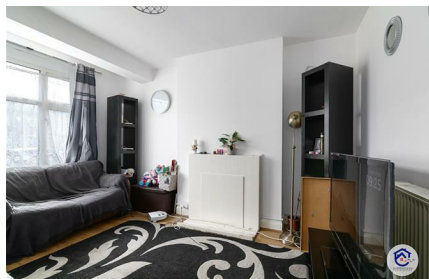
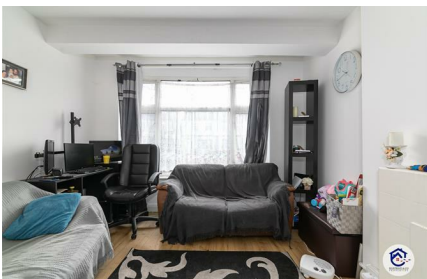


Blueprints & Co Properties are pleased to present this three bedroom terraced house ideally located between Ponders End and Brimsdown stations. The property comprises of a reception room, kitchen and bathroom on the first floor along with a generous sized garden. On the first floor, two double bedrooms and a single bedroom. The vendor has priced this well-kept home extremely sensibly, as such, we would welcome an immediate viewing.

EPC rating: D

Tenure: Freehold

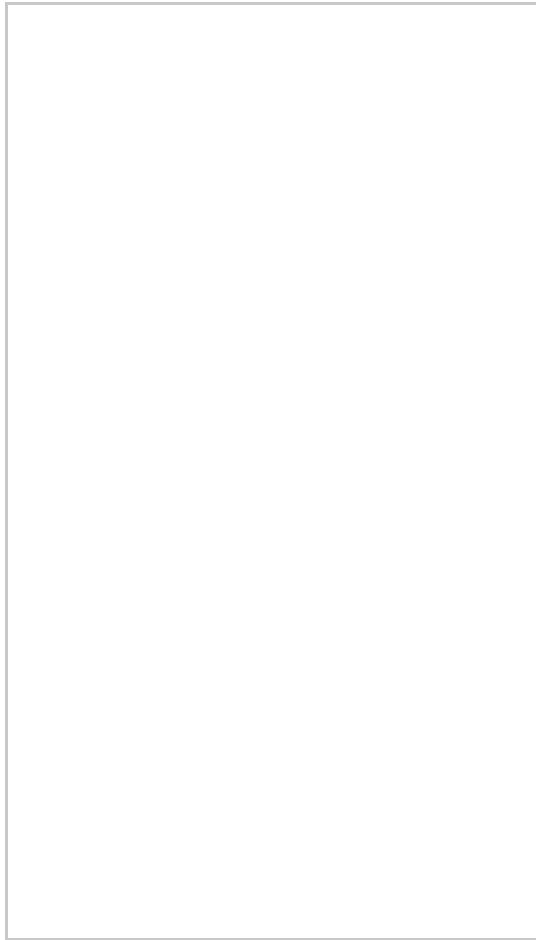
Council tax band: C



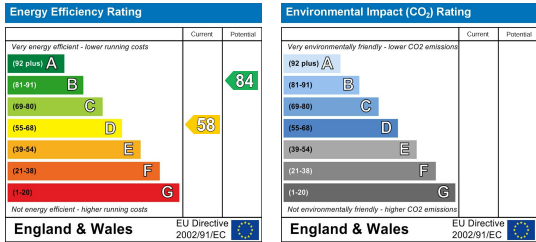
Area Map



Floor Plans



Energy Efficiency Graph



These particulars, whilst believed to be accurate are set out as a general outline only for guidance and do not constitute any part of an offer or contract. Intending purchasers should not rely on them as statements of representation of fact, but must satisfy themselves by inspection or otherwise as to their accuracy. No person in this firm's employment has the authority to make or give any representation or warranty in respect of the property.