



**BLUEPRINTS & CO.**  
P R O P E R T I E S

Sales - Lettings - Management - Mortgages



## Great Cambridge Road

, London, N18 1LB

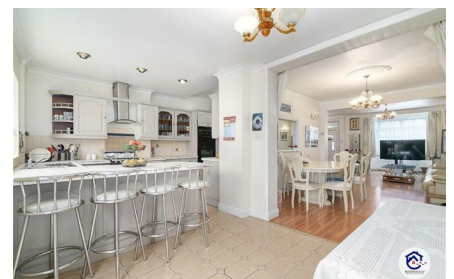
**Offers over £535,000**



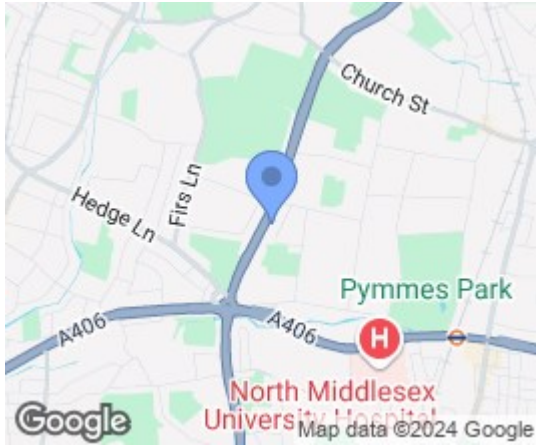
Blueprints & Co. Properties are pleased to present this lovely four bedroom mid-terraced house. This spacious property comprises of an open through lounge, an upstairs bathroom and four spacious bedrooms. It also benefits from off street parking as well as a garage with rear access. The property boasts a large private rear garden in addition to a spacious conservatory with an abundance of storage areas.

This property is ideally situated just off the A10 providing easy access to the a406. Situated very close to local amenities and with great transport links, this property is ideal for first time buyers or investors.

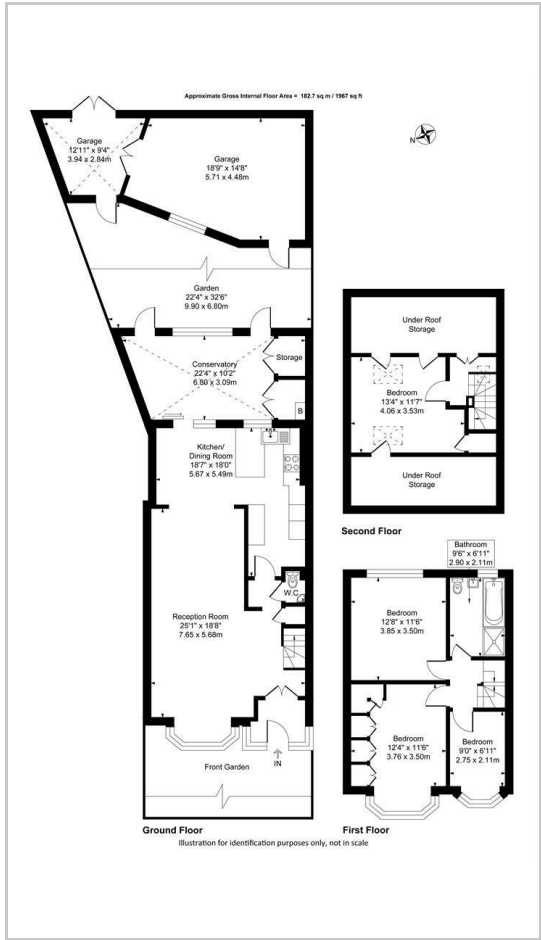
Get your viewing in early!



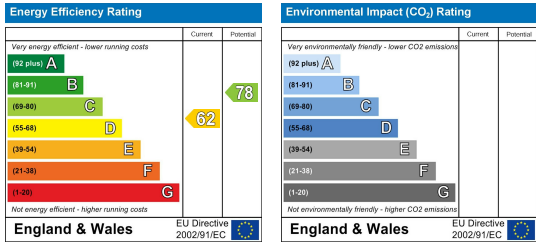
## Area Map



## Floor Plans



## Energy Efficiency Graph



These particulars, whilst believed to be accurate are set out as a general outline only for guidance and do not constitute any part of an offer or contract. Intending purchasers should not rely on them as statements of representation of fact, but must satisfy themselves by inspection or otherwise as to their accuracy. No person in this firm's employment has the authority to make or give any representation or warranty in respect of the property.