



**BLUEPRINTS & CO.**  
P R O P E R T I E S

Sales - Lettings - Management - Mortgages



## Bridle Close

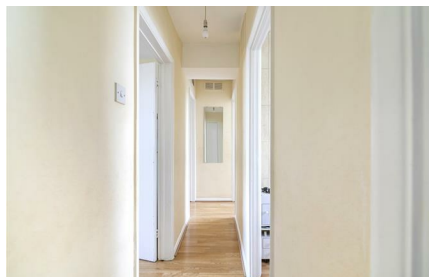
, Enfield, EN3 6EB

**Offers over £255,000**



**\*\*An ideal first time buy\*\*** Blueprints & Co Properties are delighted to present this modern two bedroom second-floor apartment to the market. Bridle Close is situated within close proximity to Enfield Lock Train Station which offers great links to both London Liverpool Street & The City. In addition offers and benefits from a long lease in excess of 900 years, Two double bedrooms, a Fitted Kitchen, Bathroom, Double Glazed Windows and Communal Grounds/Gardens/Parking. Internal Viewings Highly Recommended.

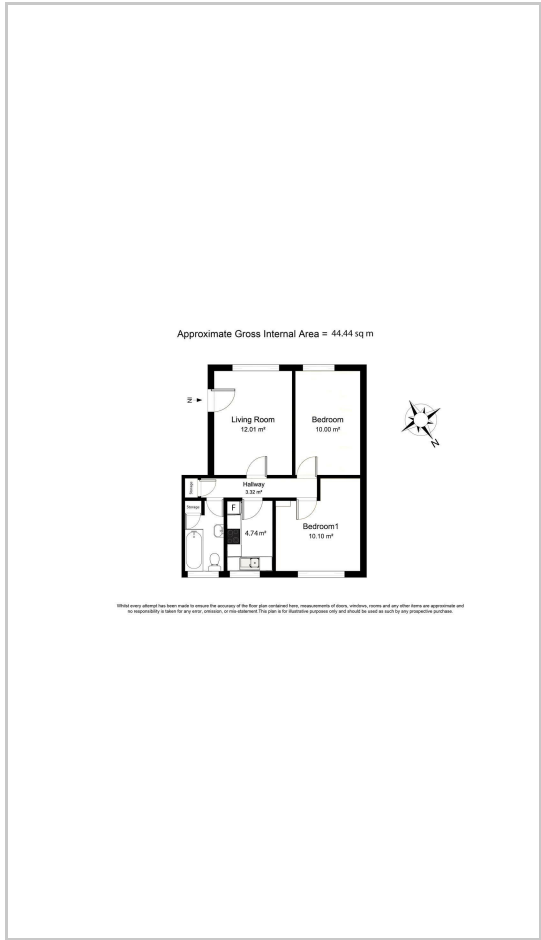
Service Charge & Ground rent - Roughly £1200 PA (including building insurance)



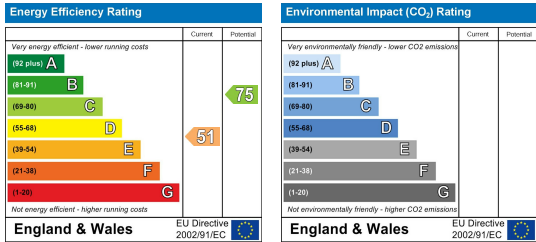
### Area Map



### Floor Plans



### Energy Efficiency Graph



These particulars, whilst believed to be accurate are set out as a general outline only for guidance and do not constitute any part of an offer or contract. Intending purchasers should not rely on them as statements of representation of fact, but must satisfy themselves by inspection or otherwise as to their accuracy. No person in this firm's employment has the authority to make or give any representation or warranty in respect of the property.