



BLUEPRINTS & CO.
P R O P E R T I E S

Sales - Lettings - Management - Mortgages



Newlyn Road

, London, N17 6RX

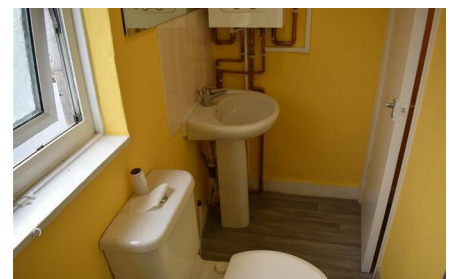
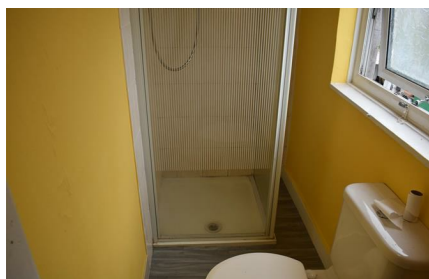
£2,500



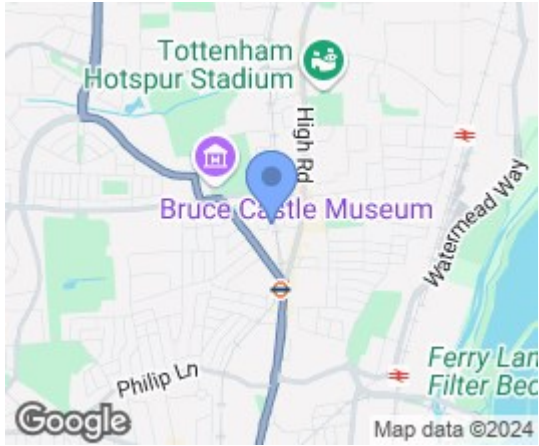
Blueprints & Co Properties are excited to present a very spacious double room Located minute's walk from Bruce grove. The studio benefits from double glazed windows, a separate bathroom, and a separate kitchen that came to be fully refurbished.

available now

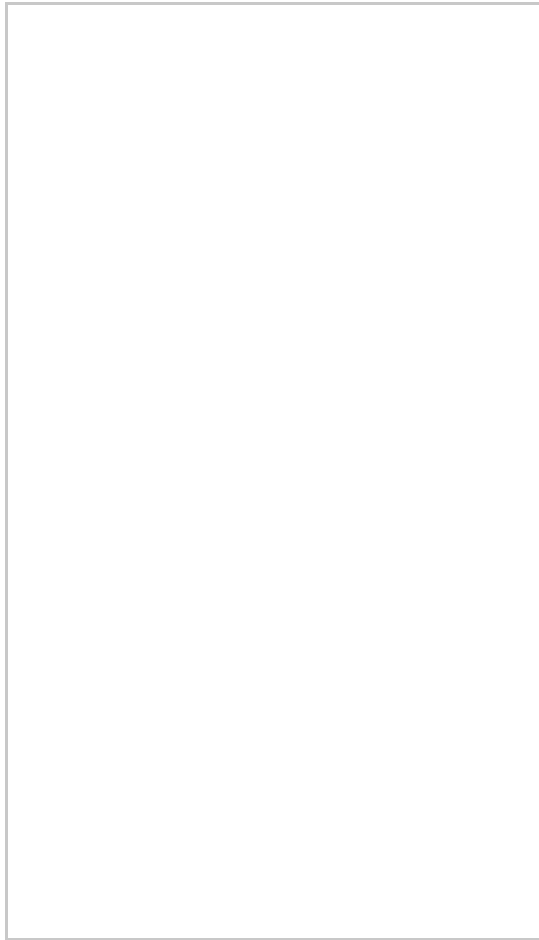
All Bills Included



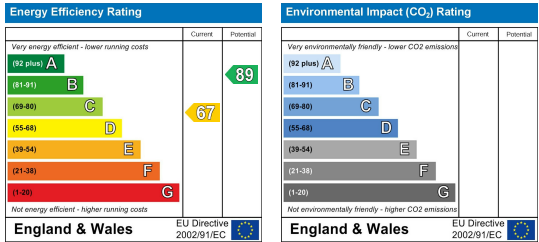
Area Map



Floor Plans



Energy Efficiency Graph



These particulars, whilst believed to be accurate are set out as a general outline only for guidance and do not constitute any part of an offer or contract. Intending purchasers should not rely on them as statements of representation of fact, but must satisfy themselves by inspection or otherwise as to their accuracy. No person in this firm's employment has the authority to make or give any representation or warranty in respect of the property.