



BLUEPRINTS & CO.
P R O P E R T I E S

Sales - Lettings - Management - Mortgages



Robert burns house

Northumberland Park, London, N17 0RB

Offers in excess of £310,000



Blueprints & Co Properties are delighted to present this maisonette has been refurbished to an extremely high standard and offers surprisingly spacious accommodation in a desirable area. Benefiting from a large private garden and a well equipped self contained garden annex.

The maisonette comprises in brief: an impressive kitchen, a bright and spacious lounge, 2 surprisingly spacious double bedrooms, stylish family bathroom and an entrance hallway. The well equipped garden annex features: a spacious living kitchen/double bedroom and a wet room.

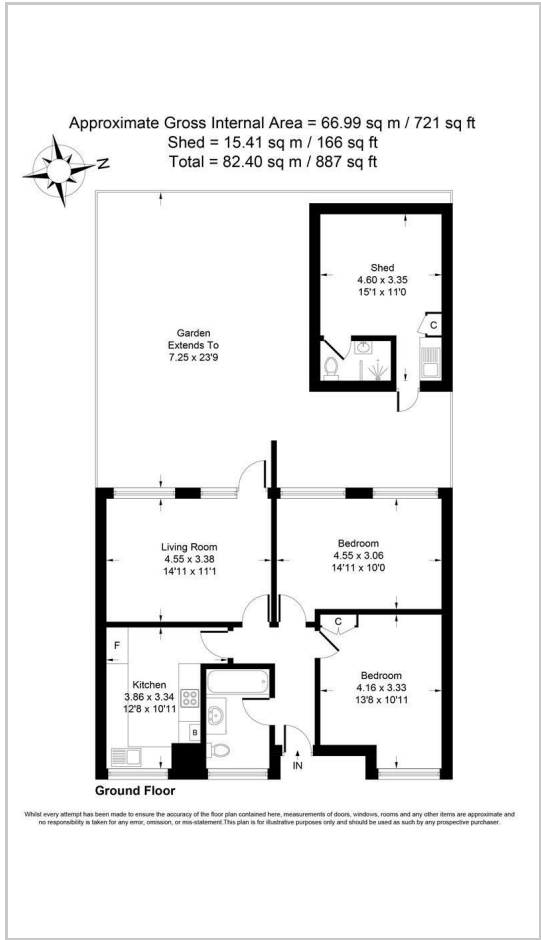
Outside there's a spacious private rear garden, off road parking and communal gardens and park area. Ideally situated for commuting nationally and into London with Northumberland Park Railway Station just a short 5 minute* stroll away and White Hart Lane overground just 14 minutes* walk away. Surrounded by many amenities within close walking distance including those on on High Road. A great location for enjoying green and outdoor spaces with Bruce Castle Park, Tottenham Marshes and Lockwood Reservoir all close by.



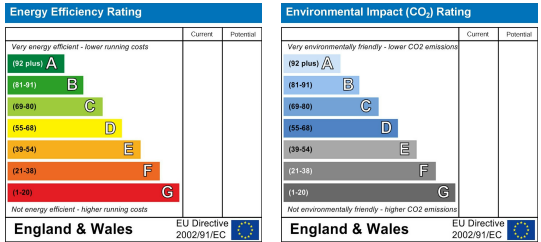
Area Map



Floor Plans



Energy Efficiency Graph



These particulars, whilst believed to be accurate are set out as a general outline only for guidance and do not constitute any part of an offer or contract. Intending purchasers should not rely on them as statements of representation of fact, but must satisfy themselves by inspection or otherwise as to their accuracy. No person in this firm's employment has the authority to make or give any representation or warranty in respect of the property.