



BLUEPRINTS & CO.
P R O P E R T I E S

Sales - Lettings - Management - Mortgages



Lancing Gardens

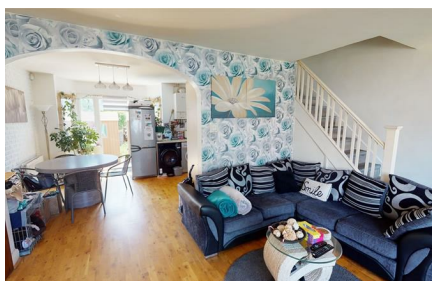
, London, N9 9EU

£380,000



Virtual tour available Realistically priced ideal first time purchase... Quiet residential turning and one of Edmonton's finest roads! Blueprints & Co Properties are delighted to offer for sale this extended three bedroom 1930's style terraced property located off the popular Winchester Road and within walking distance to Jubilee Park, local bus routes and amenities. The property features, a large through lounge, kitchen and a dining area, approx 35ft rear garden, first floor shower/room, three generous bedrooms and double glazing throughout.

Excellent transport links - ideally situated for Edmonton green station. Also within access of schools and an array of shops.



Area Map



Floor Plans



Energy Efficiency Graph



These particulars, whilst believed to be accurate are set out as a general outline only for guidance and do not constitute any part of an offer or contract. Intending purchasers should not rely on them as statements of representation of fact, but must satisfy themselves by inspection or otherwise as to their accuracy. No person in this firms employment has the authority to make or give any representation or warranty in respect of the property.